

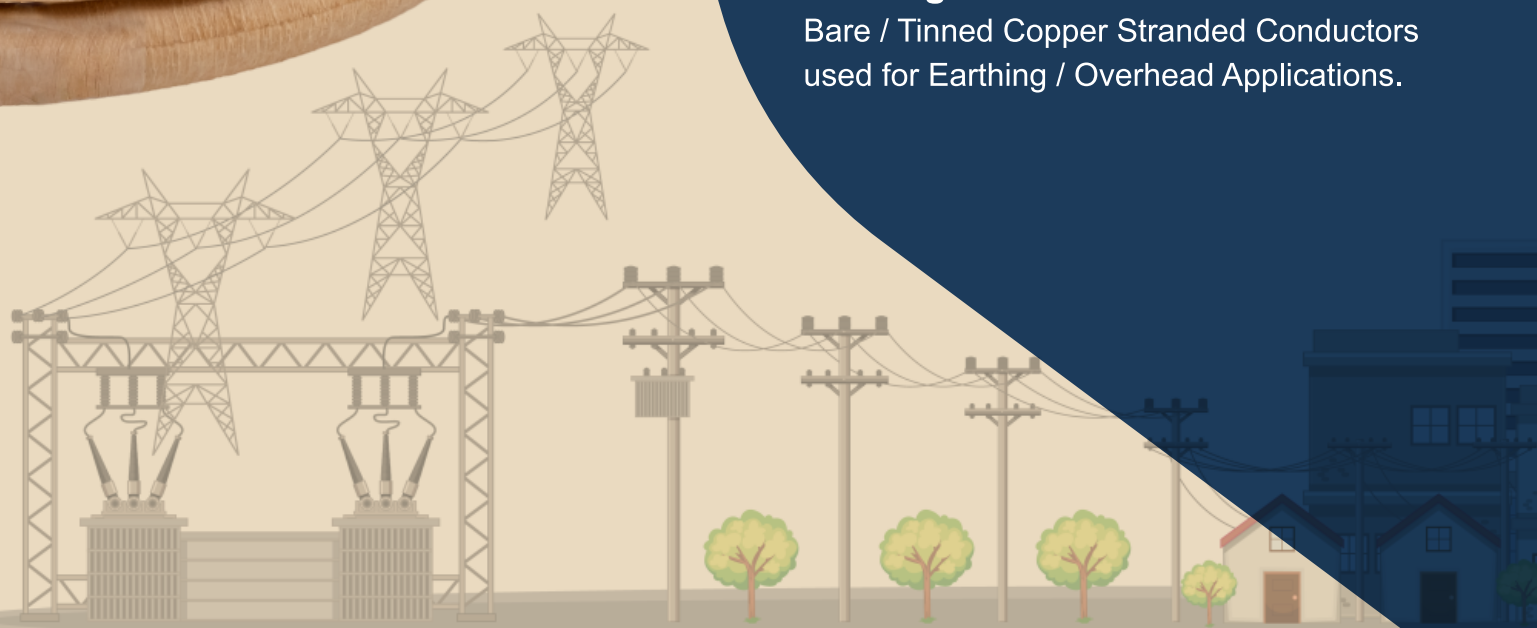


**DURGA INTERNATIONAL**



# SAFEGUARDING THE EARTH

**Leading Manufacture of -**  
Bare / Tinned Copper Stranded Conductors  
used for Earthing / Overhead Applications.





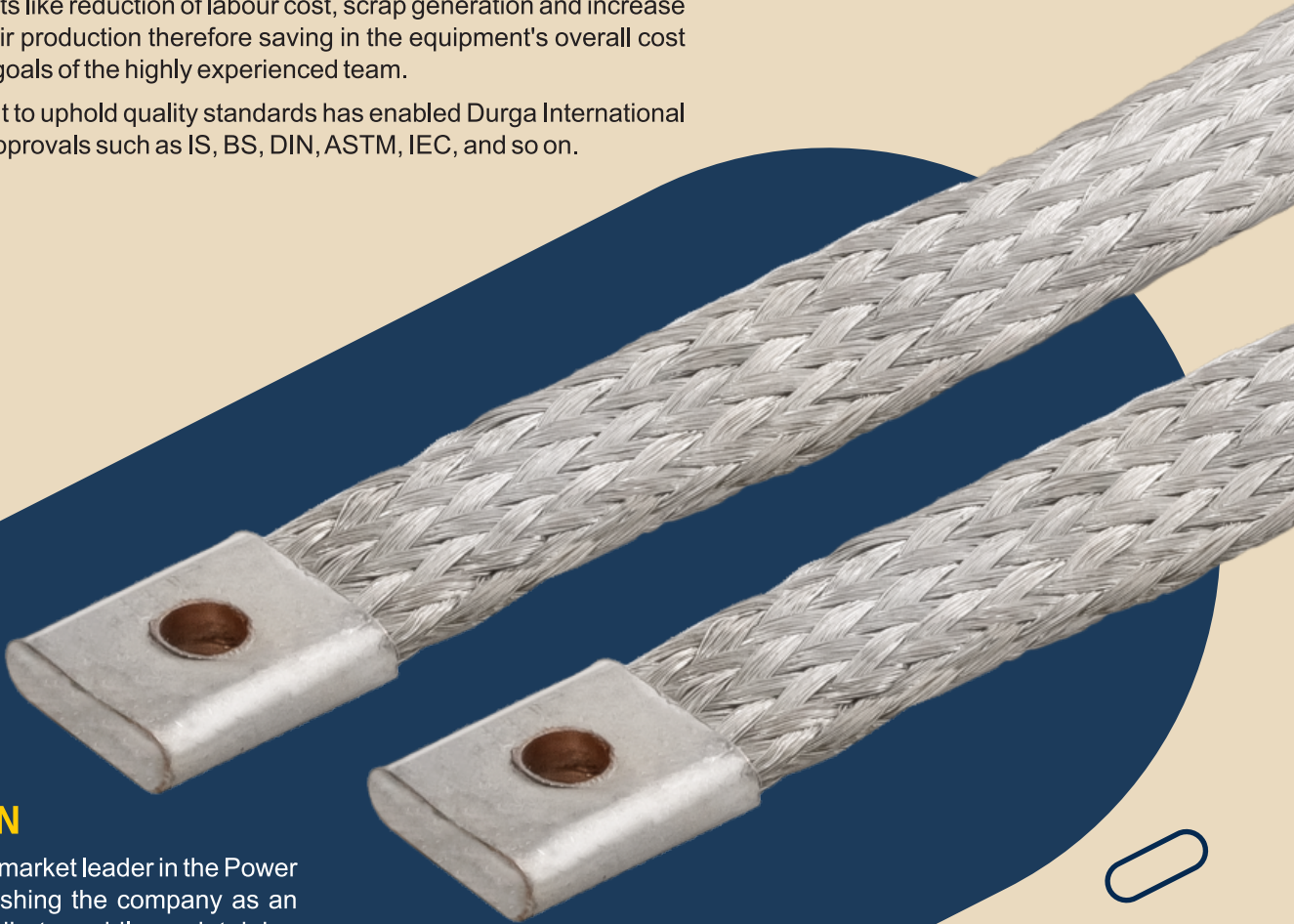
## ABOUT US

Durga International is a leading manufacturer and exporter of Copper flexible leads and connections that mainly finds its application in TRANSFORMERS, SWITCHGEARS, PANELS and other ELECTRICAL EQUIPMENT'S where connections play a critical role.

Originally founded in 2009 as a trading company, Durga International has now expanded its objective and operates a state-of-the-art manufacturing facility in Vasai, Maharashtra, India.

Developing and delivering technically advanced customized products that conform to the needs and requirements of the customer. Offering the customer benefits like reduction of labour cost, scrap generation and increase the scope of their production therefore saving in the equipment's overall cost are the primary goals of the highly experienced team.

The commitment to uphold quality standards has enabled Durga International to have global approvals such as IS, BS, DIN, ASTM, IEC, and so on.



## OUR VISION

To be the global market leader in the Power Industry, establishing the company as an important contributor while maintaining excellence and knowledge.

## OUR MISSION

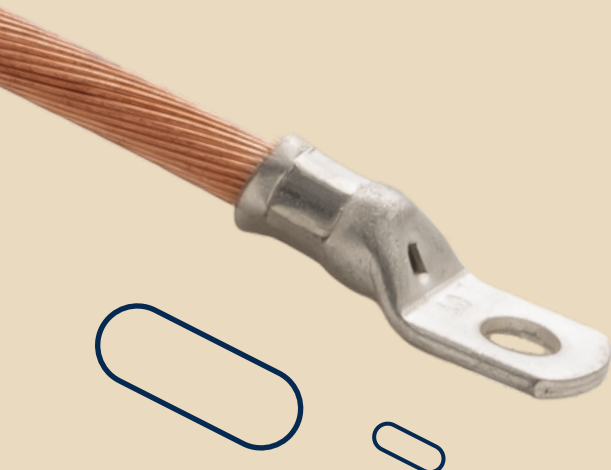
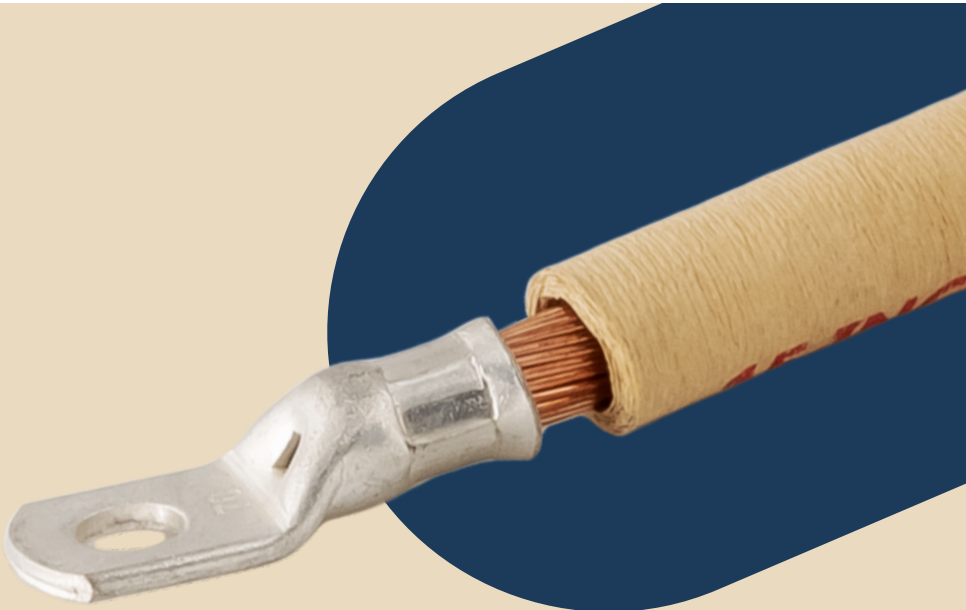
To achieve profitable growth by integrating a strong customer base, dedication, and innovation with superior quality products.





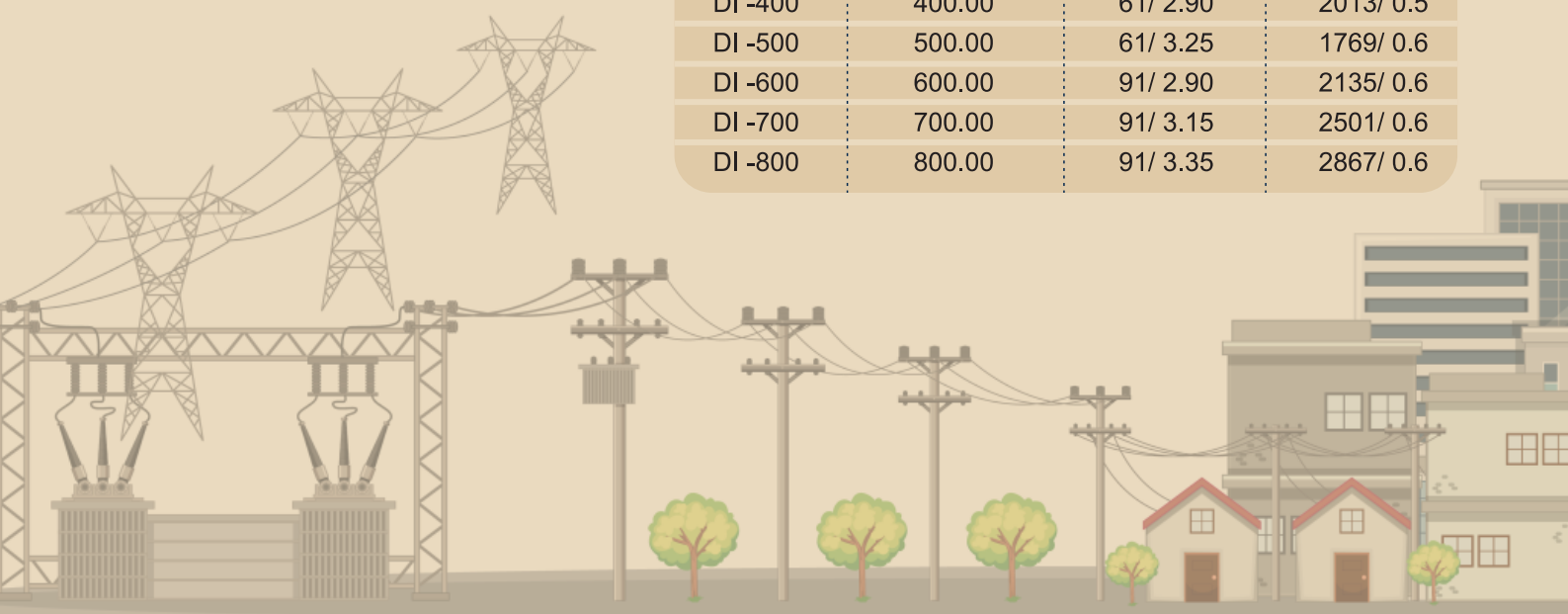
### COPPER FLEXIBLE LEADS AND CONNECTIONS (BARE AND INSULATED)

Copper stranded and flexible stranded lead (Bare as well as Insulated) are cut into lengths as per customer specifications. The crepe paper tubes are then inserted and duly crimped with lugs at both ends.



### Configurations of Bare Conductors

Code	Cross Section Area (in Sq. mm)	Stranded	Flexible
DI -25	2.50	7/0.68	20/ 0.4
DI -4	4.00	7/ 0.85	32/ 0.4
DI -6	6.00	7/ 1.05	49/ 0.4
DI -8	8.00	7/ 1.20	63/ 0.4
DI -10	10.00	7/ 1.35	84/ 0.4
DI -12	12.00	7/ 1.50	96/ 0.4
DI -14	14.00	7/ 1.60	112/ 0.4
DI -16	16.00	7/ 1.70	126/ 0.4
DI -25	25.00	7/ 2.14	154/ 0.457
DI -35	35.00	7/ 2.52	217/ 0.457
DI -50	50.00	19/ 1.83	259/ 0.5
DI -70	70.00	19/ 2.18	360/ 0.5
DI -95	95.00	19/ 2.52	475/ 0.5
DI -120	120.00	37/ 2.03	608/ 0.5
DI -150	150.00	37/ 2.27	756/ 0.5
DI -185	185.00	37/ 2.52	925/ 0.5
DI -240	240.00	61/ 2.90	1221/ 0.5
DI -300	300.00	61/ 2.52	1525/ 0.5
DI -400	400.00	61/ 2.90	2013/ 0.5
DI -500	500.00	61/ 3.25	1769/ 0.6
DI -600	600.00	91/ 2.90	2135/ 0.6
DI -700	700.00	91/ 3.15	2501/ 0.6
DI -800	800.00	91/ 3.35	2867/ 0.6







#### DIMENSIONS OF CREPE PAPER TUBE:

Minimum wall thickness: 1.50mm

Maximum wall thickness: 10.00mm

#### DIMENSIONS OF COPPER LUGS: (Bare/Tinned/Silver)

Minimum: M4

Maximum: M1000

*Note: The hole diameter will be supplied as per customer's requirement.*

#### APPLICATIONS:

- ◆ As LEAD CONNECTIONS in an OIL/LIQUID FILLED DISTRIBUTION TRANSFORMER.

#### ADVANTAGES:

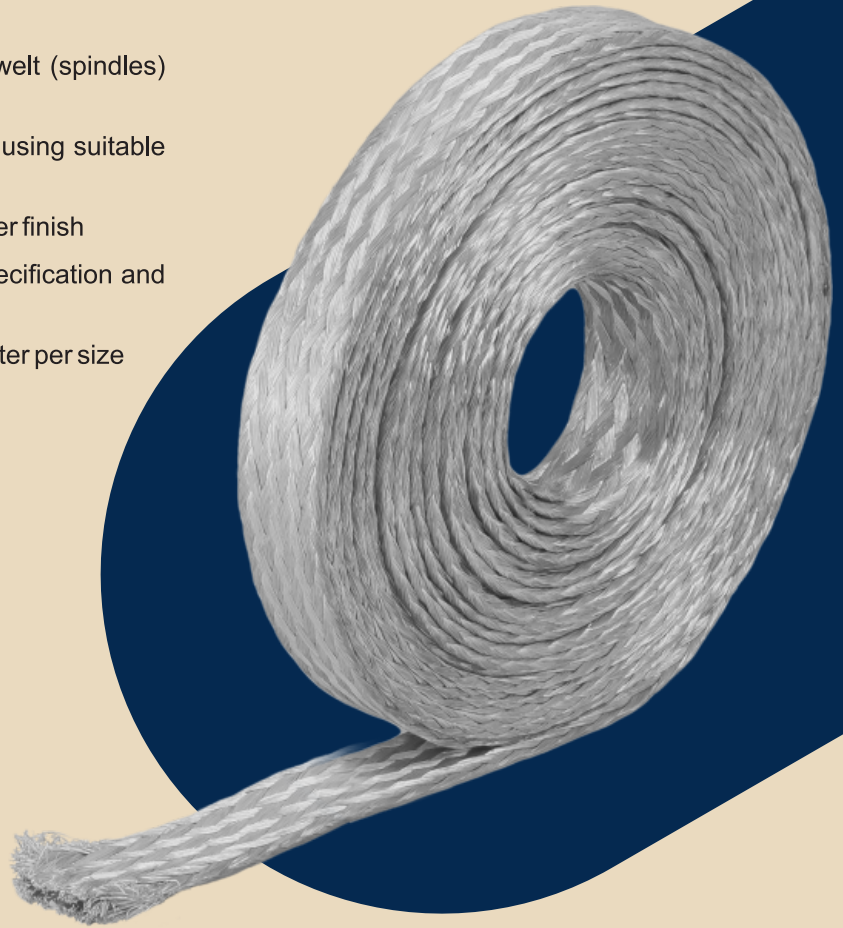
- Accurate Length
- Saves scrap Generation
- Reduction in production time
- Inventor Control (Transformer producer does not need to buy drums of Cables)
- Consistent quality of leads since we carry out 100% in-house testing of the leads.

**DUE TO THE ABOVE, THERE IS A HUGE SAVING BY THE TRANSFORMER PRODUCER.**



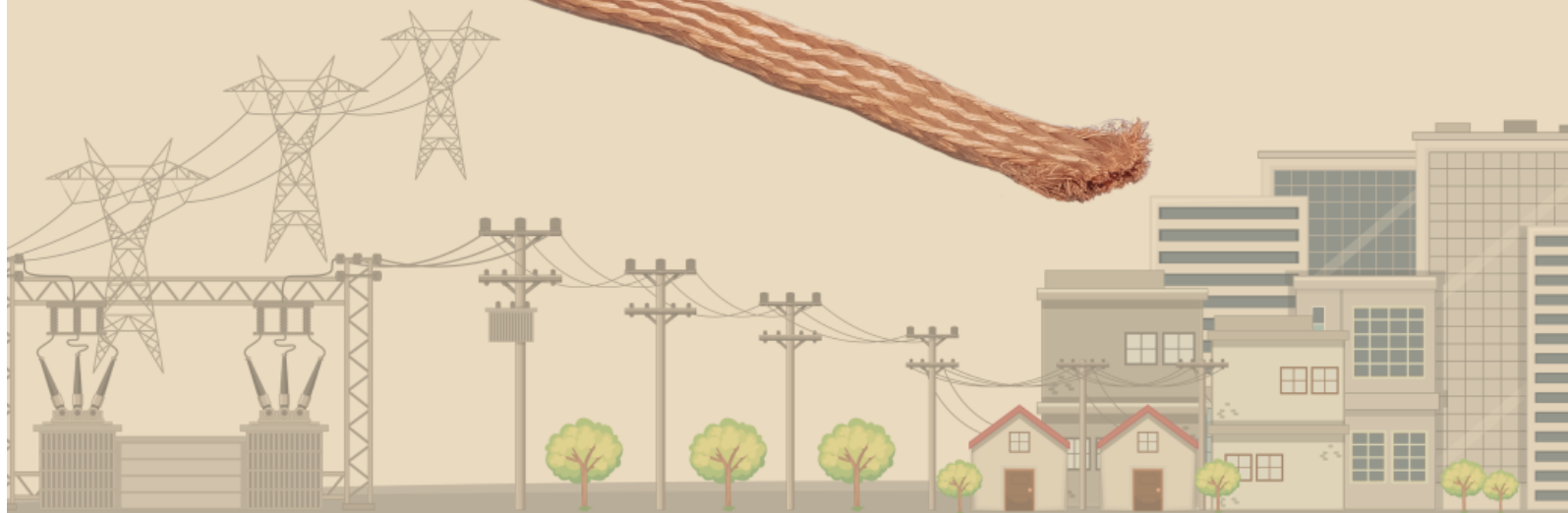
## BARE/TINNED/SILVER COATED COPPER FLEXIBLE BRAIDED WIRES

- The braids can be manufactured from different welt (spindles) such as 12, 16, 32, 36, 48, 64
- The width and thick of braid can be achieved by using suitable welt (spindle) and diameter of single wire
- The above braids can be manufactured in tin & silver finish
- Braids can be manufactured as per customer specification and various international standard
- Braids can be supplied in multiple length of 100 meter per size



### RANGE

Min. Cross section area	: 0.50 sq.mm
Max. Cross section area	: 400 sq.mm
Min. diameter of individual strand	: 0.05 mm
Max. diameter of individual strand	: 0.40 mm
Size of spindles	: 12, 16, 24, 32, 36, 48, 64
Max. No. of spindle	: 64
Min, size (Strip)	: 5 mm x 1 mm (W X T)
Max. size (Strip)	: 60 mm x 12 mm (W X T)
Max. Size of round conductor	: 40 mm (round)





## Flexible flat braided wire configuration

Cross Sectional Area (sq. mm)	Diameter of Strip (width X Thickness in mm)
2	5 x 1.0
5	8 x 1.0
8	14 x 1.3
14	17 x 1.5
22	21 x 1.9
25	25 x 2.0
30	26 x 2.5
35	25 x 3.0
38	27 x 2.7
50	30 x 3.0
50	35 x 3.0
60	37 x 2.9
70	25 x 6.0
80	45 x 3.0
100	55 x 4.5
100	35 x 6.0
125	55 x 3.0
150	60 x 5.0

## Flexible Round Braided Wire Configurations

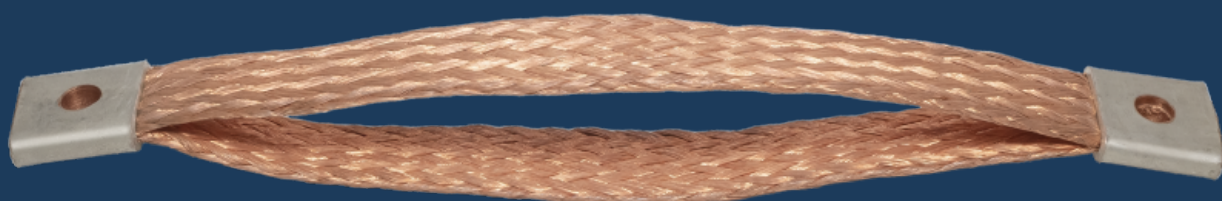
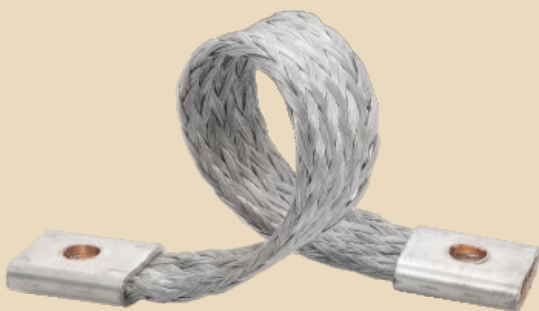
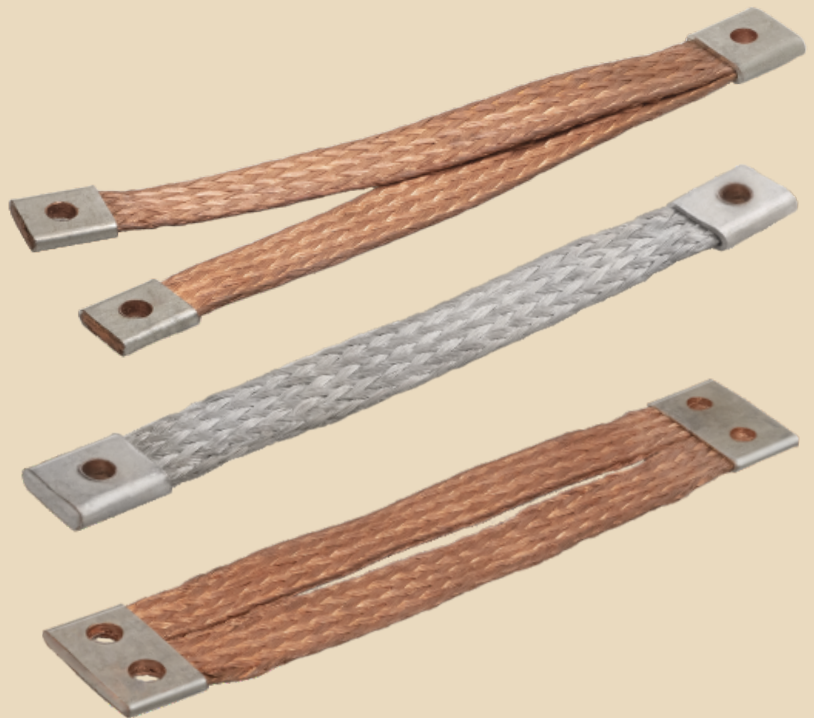
Cross Sectional Area (sq. mm)	Diameter of Max Round (D in mm)
3	2.8
6	4
10	5
14	6
25	9.8
35	11
50	13
70	16
95	22
120	24
150	26

### APPLICATION:

Circuit Breaking (Oil/Vacuum/Air)

### ADVANTAGES:

- We can produce from a minimum single wire diameter of 0.07mm upto 0.6mm
- Better bending due to its extra flexibility
- Suitable for indoor as well as outdoor application
- Excellent performance to atmosphere which leads to consistent operations







**DURGA INTERNATIONAL**

## OUR STRENGTHS:

- High technical competency.
- Our products are manufactured as per conforming to American Standards (ASTM) and (NEMA), European Standards (IEC), British Standards (BS), Japanese Standards (JIS), Korean Standards (KIS), etc.
- Flexibility to produce wide range of sizes.
- Global approvals by OEM's.
- Wide network of Strategic Partners globally.
- Excellent packing and logistics capabilities.
- On time delivery commitment.



### Corporate Office:

Unit No.101, Unique Industrial Estate, Golani Naka,  
Valiv Road, Vasai Road (East) 401208, Maharashtra, INDIA  
[www.durgainternational.co](http://www.durgainternational.co) | [info@durgainternational.co](mailto:info@durgainternational.co)